



PRODUCT DESCRIPTION

Vapor Tight Fixture

60W, 150W and 230W IP65 rated High Bay, delivers high Lumen output with exceptional 85 CRI while achieving minimum of 119 lumens per watt. This is a perfect and most affordable replacement for typical Low Bay and High Bay Metal Halide, HPS and T5HOs as well as other high bay fixtures.

It is available in 4000k,5000k,6000-6500k CCT

Best for any new construction applications or retrofitting existing fluorescent and other fixtures widely used in industrial and commercial applications.

PRODUCT SPECIFICATIONS

LED Chip

Samsung 5730 LED Chip and "active colour management" maintains superior color consistency over time and temperature.

Every fixture is tuned as a complete system to the optimal CRI before shipment, to ensure fixture-to-fixture color consistency.

Heat Sink

Heat sink is the integrated part of the fixture, it works as a back bone, structural support, as well as high efficiency heat sink that spans the whole length of the fixture.

It provides much larger cooling surface than comparable LED High Bay fixtures and it has a much larger cooling surface compared to existing LED high bays.

Optical System

Optical system allows a very even light foot print that creates very uniform light levels.

It also allows to eliminate pixeling effect that is an issue with "open" LED fixtures

ORDER INFORMATION

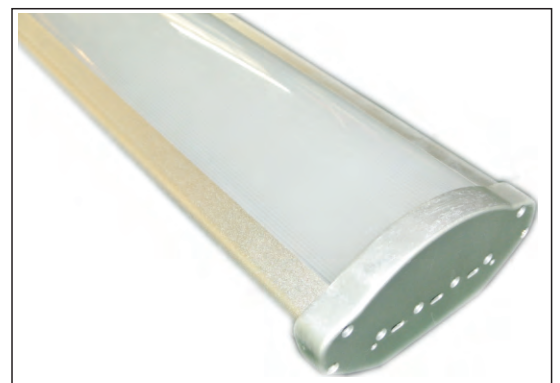
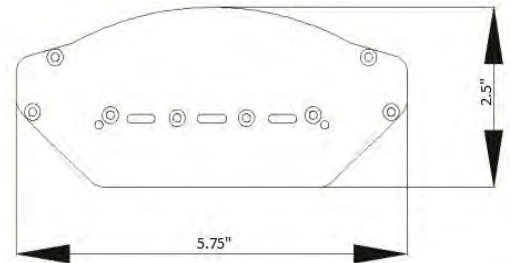
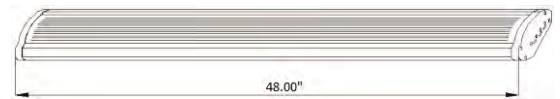
Product category	Fixture wattage	Dimming Option	CCT	INPUT VOLTAGE
ELHB-P1-60W-XK	60W	YES	5000k	100-277v
ELHB-P2-60W-XK				180-528v

Product category	Fixture wattage	Dimming Option	CCT	INPUT VOLTAGE
ELHB-P1-150W-XK	150W	YES	5000k	100-277v
ELHB-P2-150W-XK				180-528v

Product category	Fixture wattage	Dimming Option	CCT	INPUT VOLTAGE
ELHB-P1-230W-XK	235W	YES	5000k	100-277v
ELHB-P2-230W-XK				180-528v

X- represents color temperature, X=Number 3,4,5,6

60W 150W 230W IP65 High Bay



PERFORMANCE SUMMARY

Input Power: 60 Watts
Delivered Light Output: 7,440 Lumen
Efficacy: 120Lm/w
CRI: Ra>85
DLC CCT: 5000K
Input Voltage: 100-277 VAC 180-528 VAC
Input current: 0.27A
THD:<15%
Standard Warranty: 10 Years Limited
Standard Lifetime: Designed to L70 minimum 150,000 hours
Mounting Options: wire, chain, pendant, surface
Dimensions: L 47.2" x W 5.75" x H 2.5"
Weight: 5.5KG/12 Lbs

Input Power: 150 Watts
Delivered Light Output: 18,000 Lumen
Efficacy: 120Lm/w
CRI: Ra>85
DLC CCT: 5000K
Input Voltage: 100-277 VAC 180-528 VAC
Input current: 0.68A
THD:<15%
Standard Warranty: 10 Years Limited
Standard Lifetime: Designed to L70 minimum 150,000 hours
Mounting Options: wire, chain, pendant, surface
Dimensions: L 47.2" x W 5.75" x H 2.5"
Weight: 5.5KG/12 Lbs

PHOTOMETRY

Fixture photometry has been conducted by accredited testing laboratory in accordance with IESNA LM-79-08. IESNA LM- 79-08 specifies the entire luminaire as the source resulting in a fixture efficiency of 100%.Result may vary per actual order.



Input Power: 235 Watts
Delivered Light Output: 28,100 Lumen
Efficacy: 120Lm/w
CRI: Ra>85
DLC CCT: 5000K
Input Voltage: 100-277 VAC 180-528 VAC
Input current: 1.92A
THD:<15%
Standard Warranty: 10 Years Limited
Standard Lifetime: Designed to L70 minimum 150,000 hours
Mounting Options: wire, chain, pendant, surface
Dimensions: L 47.2" x W 5.75" x H 2.5"
Weight: 5.5KG/12 Lbs